



1122 Old Chattahoochee Ave, Ste A, Atlanta, GA

Opportunity

- 5,200 SF available
- 1,800 SF of Office
- 30,855 total building size
- 22' clear height
- 22' x 40' bay size
- Doors - 1 (9'5 x 8'9) DI
- 160' building depth
- Sprinklered

Location



16 Miles to
Airport



1 Miles to
I-75



3 Miles to
I-285

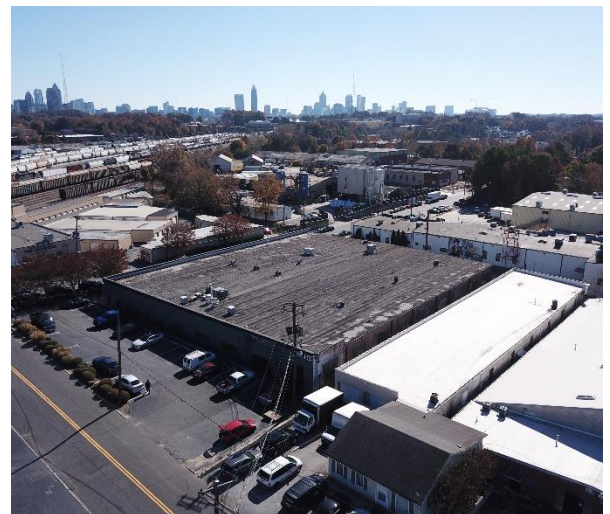
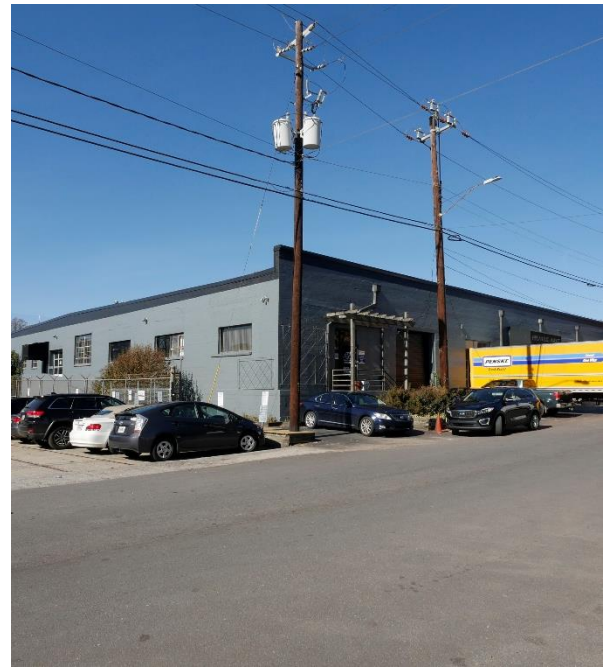
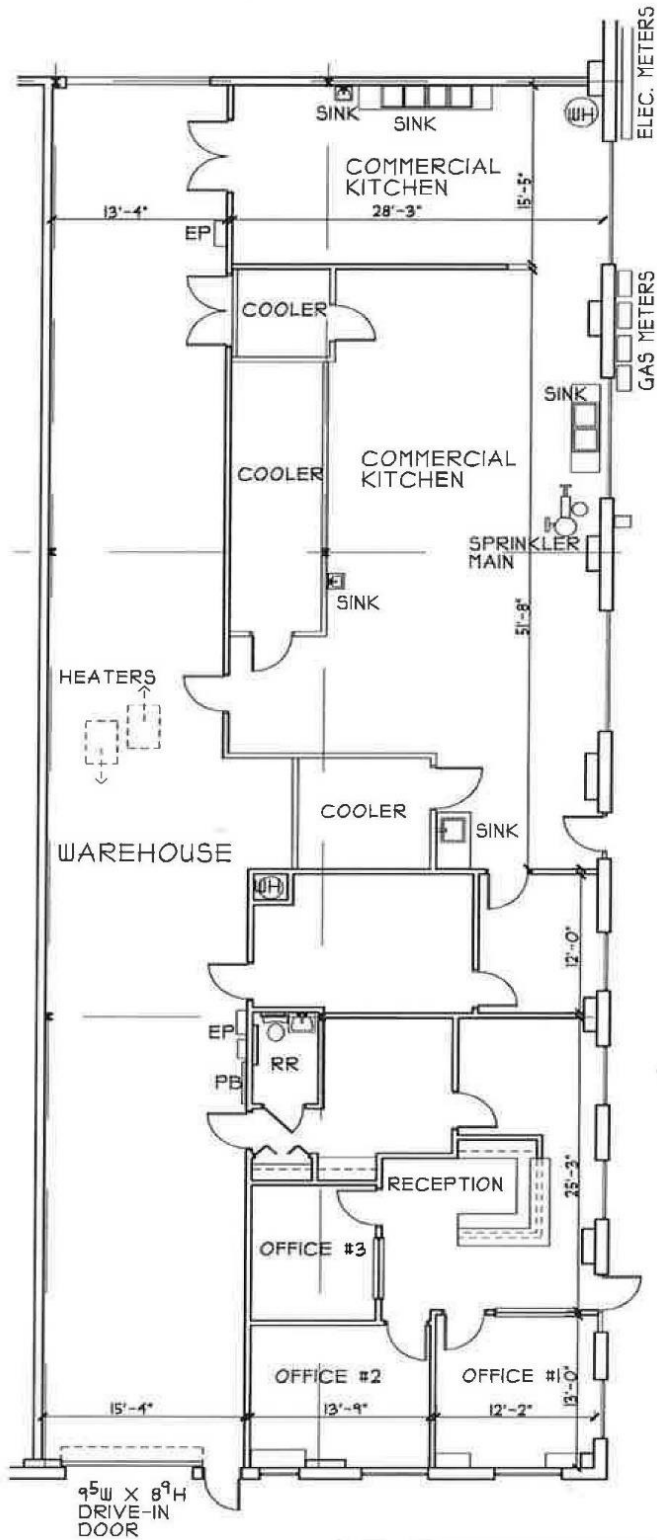
**For further
information**

Bruce Logue
Principal
+1 770 916 6150

avisonyoung.com

Industrial For Lease

1122 Old Chattahoochee Ave, Ste A, Atlanta, GA



For further information



Bruce Logue
Principal
+1 770 916 6150
bruce.logue@avisonyoung.com

Owned by:

